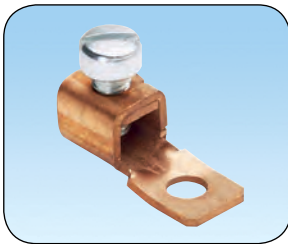


Mechanical Connectors

Panduit® offers a broad variety of mechanical lugs, splices, and split bolt connectors suitable for a wide range of electrical terminations using code conductor. Designed to be reusable and installed without special tooling, Pan-Lug™ Mechanical Connectors provide quality performance, ease of installation, and lowest installed cost.



- **Functional product information is marked directly on the connector, facilitating the identification, ordering, and usage of the mechanical connector**
- **Incorporate wide wire range-taking capability to minimize inventory requirements**
- **Made from high strength, high conductivity electrolytic copper and aluminum alloy materials to provide optimum connectivity for power and grounding applications**
- **UL Listed and CSA Certified, as noted**

Pan-Lug™ Mechanical Connectors include split bolt connectors, copper mechanical lugs, aluminum mechanical lugs and aluminum multi-tap connectors with clear PVC insulation. Products are available in stamped and formed, extruded and cast varieties of multiple barrel and tongue configurations to provide solutions for diverse power and grounding needs. Panduit offers a wide assortment of Pan-Lug™ Power and Grounding Connectors to meet customer needs and today's application requirements.

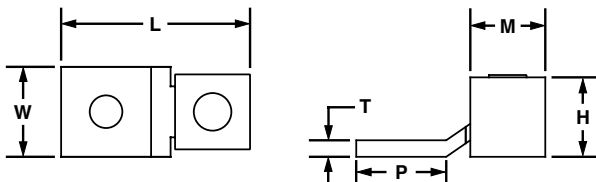


One-Hole, Single Piece, Straight Fixed Tongue, Tin-Plated

For Use with Stranded Copper Code Conductors

Type CXS-T

- Made from a single piece of high strength electrolytic copper to provide premium electrical and mechanical performance
- Patented one piece design. Provides premium electrical and mechanical
- Wide wire range-taking capability minimizes inventory requirements
- Serrations incorporated in barrel of connector to provide premium wire pullout strength of wire termination
- Plated, fillister head, steel set screw provides high strength, durable electrical contact between conductor and connector
- cULus Listed for use for up to 600 V and temperature rated to 90°C where applicable
- Tin-plated to inhibit corrosion



| Part Number | Copper Conductor Size Range | Stud Hole Size (in.) | Figure Dimensions (in.) | | | | | Std. Pkg. Qty. |
|--------------|-----------------------------|----------------------|-------------------------|------|------|------|------|----------------|
| | | | L | W | H | T | M | |
| CXS35-36T-C | 14 AWG - 6 AWG | 3/16 | 1.08 | 0.38 | 0.39 | 0.05 | 0.47 | 100 |
| CXS70-14-T-C | 14 AWG - 4 AWG | 1/4 | 1.28 | 0.5 | 0.5 | 0.06 | 0.53 | 100 |
| CXS125-14T-Q | 4 AWG - 1/0 AWG | 1/4 | 1.6 | 0.62 | 0.73 | 0.09 | 0.65 | 25 |
| CXS125-56T-Q | 4 AWG - 1/0 AWG | 5/16 | 1.6 | 0.62 | 0.73 | 0.09 | 0.65 | 25 |